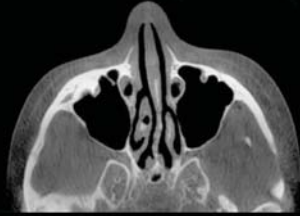
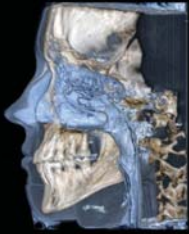


# ILUMA™

Engineered by IMTEC Imaging



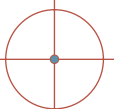
Now Available from

**Kodak** | Dental Systems

*Ultra Cone Beam CT Scanner  
Powered by FlashCT® Technology*



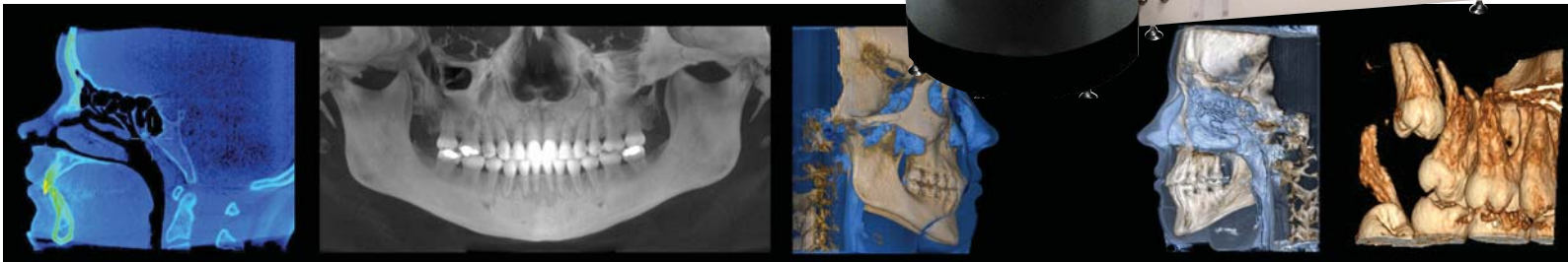
*The All in One  
Radiographic Machine*





*powered by FlashCT® Technology*

ILUMA uses the latest generation of advancements in Cone Beam Volumetric Tomography to produce advanced, state-of-the-art images. When using ILUMA, clinicians have the most accurate anatomic information to plan treatment procedures. ILUMA delivers accurate images in as little as four minutes with images comparable to Medical CT's with much less radiation doses.



## *ILUMA Features and Benefits*

---

The ILUMA simplifies the process of evaluating treatment planning and achieving successful treatment procedures. Obtaining images powered by *FlashCT*<sup>®</sup> Technology in-office increases the likelihood of a proposed treatment plan being accepted by the patient. All rendering can occur at the clinician's office making the information readily available.



*3D Region of Interest*

## *ILUMA Features*

---

- Orthodontic and Maxillofacial applications
- Amorphous Silicon Flat Panel Sensor Plates
- Offers up to 19 x 24cm (cylindrical) volume of reconstruction
- Highest resolution images
- Full-volume rendering
- Ultra-thin CT slices (as thin as 0.09mm)
- Treatment planning & simulation software: ILUMA Vision 3D™, V-Works™ & V-Implant™ Professional
- Panoramic and 2D radiographic images
- Conversion to DICOM 3. Compatible with 3rd Party software & systems

## Key Features of ILUMA™ Vision 3D

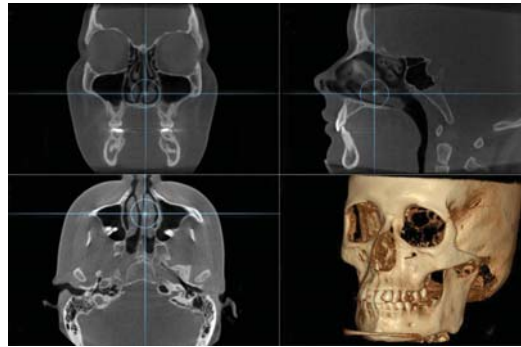
- Volume rendering
- Patient/Study database/PACS interface
- MIP, Mini IP, Ray Sum rendering
- Cross-sectional viewing
- Panoramic restorations
- Powerful segmentation tools
- Implant simulations
- Surgery simulations
- Nerve display
- Output to DICOM 3 file formats
- 1:1 scale images
- Report Generator
- Export to STL for modeling
- Measuring tools

Rotate Axis

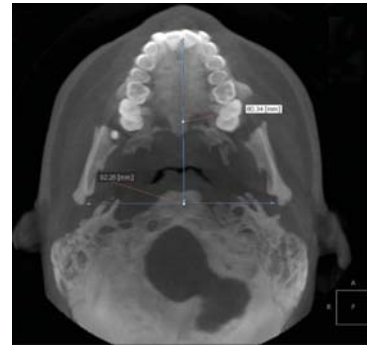




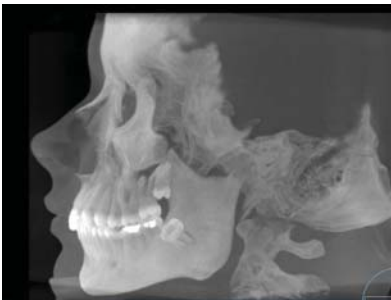
*Cephalometric*



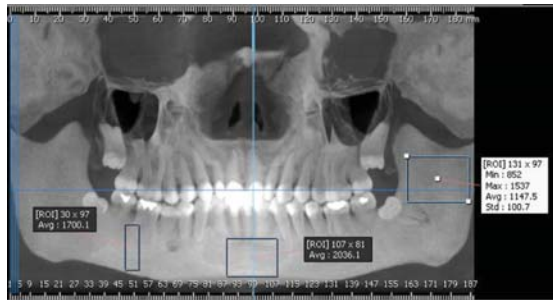
*Multi-Planar Reconstruction (MPR)*



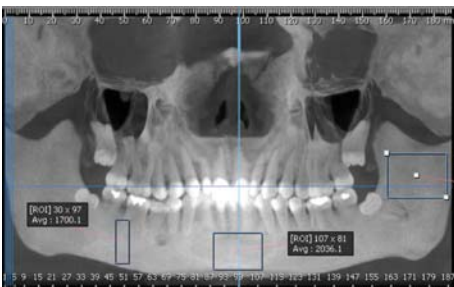
*Dental Reformat Axial*



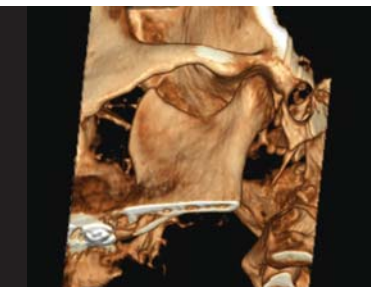
*Maximum Interest Projection*



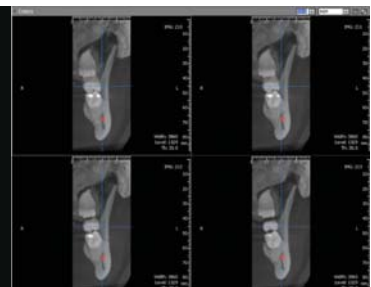
*Panoramic with Nerve Mapping*



*Bone Density*



*TMJ*



*Cross Sectional Viewing*

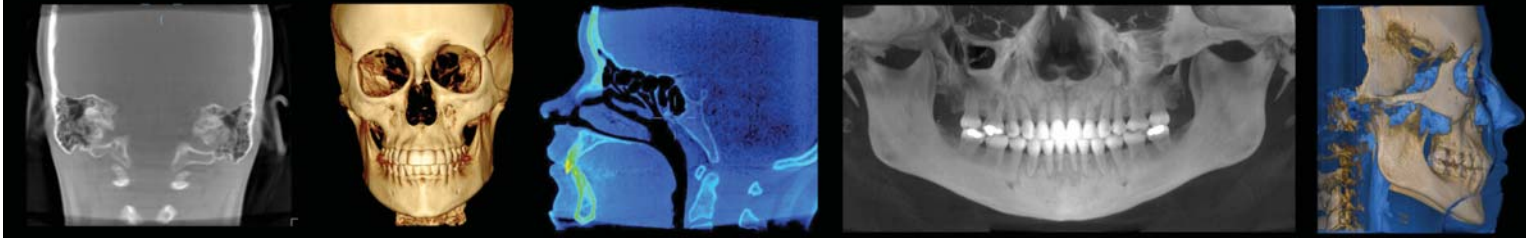
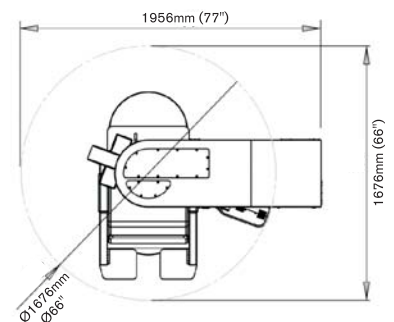


Plate Dimensions	26 x 31 cm - horizontal, vertical, or vertical extended view options
Volume of Reconstruction	(cylindrical) up to 19 x 24cm
X-ray Source	High Frequency, constant potential, 120 kVp, 1 - 3.8 mA
Focal Spot	0.3mm
Image Detector	127 micron (0.005 inch) Amorphous Silicon Flat Panel
Software OS	Windows XP Pro (64 bit)
Workstation	Dual Core Pentium 64 bit processor
Gray Scale	14 bit (16,384 gray scales)
Voxel Size	Selectable: Standard - 0.4mm / Normal - 0.3mm / High - 0.2mm / Ultra High - 0.09mm
Image Acquisition	Cone beam tomography geometry - single 360° rotation
Scan Time	Variable scan times between 20 and 40 seconds
Patient Position	Seated with rear head stabilization and chin support
Reconstruction Type	Cone beam
Reconstruction Time	2.5 minutes or greater, dependant on volume & resolution to be constructed
System Footprint	1067mm x 1422mm
System Weight	350 kg (770 lbs)
Recommended Minimum Room Size	245cm x 245cm x 245cm (l x w x h)



*The ILUMA CBCT scanner is delivered as a complete package including software, computer, dual monitors, installation, training, delivery and a full year warranty.*

**KODAK INFOLINE**

**Free phone** – United Kingdom: 0800 89 51 13  
 Ireland: 1800 55 49 97 - Denmark: 800 171 49  
 Norway: 800 11 167 - Greece: (01) 689 8620  
 - Other countries: +49 (711) 406-3910

